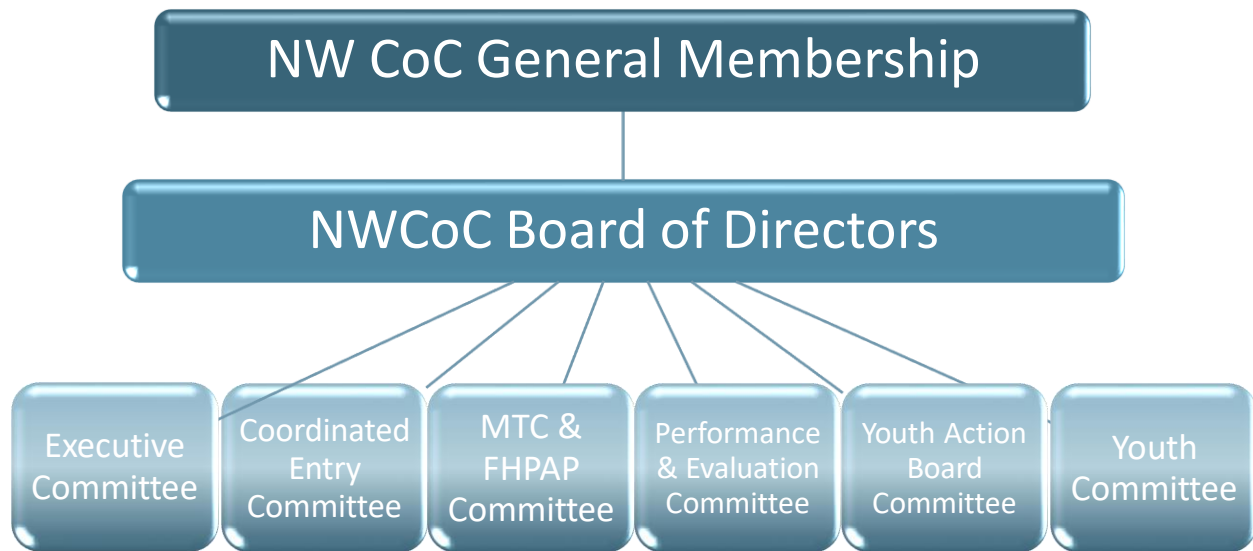


2023 Northwest Minnesota CoC Membership



BOARD MEMBERS			Term End
1.	Anishinaabe Legal	Rita Ostman	12/31/2024
2.	Housing Matters	Jennifer Dunham	12/31/2023
4.	Evergreen Youth & Family Services	Elena Guerra	12/31/2025
4.	Institute for Community Alliances (non-voting)	Thom Romano	N/A
5.	Inter-County Community Council (ICCC)	Lori Wollman	12/31/2024
6.	MAHUBE-OTWA Community Action Partnership	Shannon Lee	
7.	Sanford Behavioral Health	Catie Lemay	12/31/2025
8.	Alluma	Sheril Schluchter	12/31/2025
9.	Priority List Manager / TVOC (non-voting)	Lori Anderson	N/A
10.	NWICDC	Kayla Madigan	12/31/2024
11.	Tri-Valley Opportunity Council	Maureen Hams	12/31/2023
12.	Legal Services of NW Minnesota	Karyn Novak	
13.	Leech Lake Band of Ojibwe	Jean Roper	12/31/2024
14.	White Earth Band of Ojibwe/Homeless Program	Matt Folstrom	12/31/2023
15.	Youth Lived Exp. Representative/Youth Action Board	Kieran Zshokke	12/31/2023
16.	Adult Lived Exp. Representative	Laura Robertson	12/31/2023
17.	NW MN Multi-County HRA	Myranda Seopia	12/31/2025
18.	Violence Intervention Project	Stacy Reay	2/31/2024

2023 Northwest Minnesota CoC Membership

EXECUTIVE COMMITTEE		MEMBER	TERM
Chair		Lori Wollman	1/1/2022– 12/31/2023
Chair-Elect		Rita Ostman	1/1/2022 – 12/31/2023
Secretary		Elena Guerra	1/1/2022 – 12/31/2023

COMMITTEES		
COMMITTEE	GOALS	MEMBERS
Executive Committee	<ol style="list-style-type: none"> 1. Nominate Officers as needed 2. Support CoC Annual Plan & Calendar 3. System Performance Measures 4. Evaluate CoC Coordinator 5. Inform & monitor planning grant goals & budget 	Maureen Hams Lori Wollman Rita Ostman
Coordinated Entry Committee	<ol style="list-style-type: none"> 1. Assure compliance w/ HUD. 2. Annually update CES Policies and Procedures 3. Annually evaluate CES 4. Identify system improvements 5. Establish & monitor CES training guidelines 6. Develop CES marketing materials 7. Marketing campaign for “Housing Access” 8. Explore database development for DV and Youth 9. Quarterly Data Review & evaluation for trends and gaps– demographics, outcomes, & equity 10. Monitor & support data quality and compliance via quarterly review 11. Help inform CoC data training 12. Support & Review PIT/HIC/AHAR 	Maureen Hams (TVOC) – Chair Open to any CoC Members
Performance Evaluation Committee	<ol style="list-style-type: none"> 1. Review CoC projects (ES, TH, RRH, PSH, OPH) and system performance 2. Help inform and improve CoC training 3. Conduct site evaluations 4. Support TA to underperforming projects 5. Support system and project goals for increased earned and overall income. 6. Systems Performance Goals and Targets 7. Review NOFA 	Melody Gordon (VA) Chair Sandy Hennum (NWRDC) Catie LeMay (Sanford) Karyn Novak (NWLS) Sheril Schluchter (NWMHC) Lori Anderson (TVOC)

2023 Northwest Minnesota CoC Membership

Youth Action Board	<ol style="list-style-type: none"> 1. Bring youth voice and perspective to YHDP 2. Co-equal governance partner with Youth Cte. 3. Participate in Continuous Quality Improvement for YHDP projects 	
Youth Cte.	<ol style="list-style-type: none"> 1. Support systems goal of ending youth homelessness 2. Develop and support Youth Action Board & Youth Collaboration Process 3. Implement Coordinated Community Plan 4. Participate in Ranking/Scoring for YHDP Projects 5. Integrate YHDP learning into CoC processes and structure 6. Oversee continuous quality improvement process for YHDP projects 	Chair: Lori Wollman Open to all CoC Members.
Minnesota Tribal Collaborative & Sub regional Homeless Committees	Sub-regional planning group focused on monitoring homeless programs, specifically state FHPAP-funded program. Provide local updates on planning and homelessness to the full CoC.	Hyacinth Stiffler – BI-CAP FHPAP Mary Riegert - Minnesota Tribal Collaborative / FHPAP Marcia Otte – MAHUBE-OTWA FHPAP Maureen Hams – Tri-Valley FHPAP

General Member Agencies

Anishinabe Legal Services
Akeley Regional Area Community Center and Emergency Shelter
Alluma
Beltrami County
Bemidji County Social Services
Bemidji School District ISD 31
Bi-County Community Action Program
Care and Share of Crookston
Center for Human Environment
Clearwater County Social Services
Evergreen Youth & Family Services
Family Safety Network
Housing Matters
HRA of Bemidji
HRDC – Beltrami/Hubbard/LOW
Hubbard County Social Services
Institute for Community Alliances
Inter-County Community Council
Kittson County Social Services
Lake of Woods County Social Services

2023 Northwest Minnesota CoC Membership

Leech Lake Housing Authority – Homeless Resource Program
Legal Services of NW MN
Mahnomen County Social Services
MAHUBE-OTWA Community Action
Marshall County Social Services
MN Assistance Council for Veterans
MN Coalitions for the Homeless
MN Council of Non-Profits
MN Dept. of Corrections
MN Interagency Council (MICH)
MN of Human Services (Economic Opportunity)
Nameless Coalition for Homeless
Norman County Social Services
Northwest Community Action
Northwest Indian Community Development Center
Northwest Minnesota Foundation
Northwest Minnesota HRA
Northwoods Coalition for Battered Women
Park Place (Bemidji)
Pennington County Social Services
Peoples Church
Polk County Social Services
Red Lake County Social Services
Red Lake Homeless Shelter
Red Lake Housing Authority/Red Lake Band of Chippewa
RMCEP
Roseau County Social Services
Sanford Behavioral Health
Social Services Advocacy Tribal Coordinator DHS
St. Cloud VA-Leech Lake Tribal HUD VASH
Tri-Valley Opportunity Council
Veterans Administration
Village of Hope
Violence Intervention Project
White Earth Band of Ojibwe
White Earth Tribal VASH/Fargo VA
Youth Action Board